

DFA Scholarship

Applications Available

Each year, the Delaware Forestry Association awards a \$1000 scholarship to a full-time student who has been accepted or enrolled in a forestry-related major in a two-year or four-year accredited school program. The Delaware Forestry Association is accepting scholarship applications throughout the year, with a **deadline of April 1** each year. We will notify the chosen applicant of their award by **May 1**.

More information and the application can be found:
<https://delawareforest.com/scholarship>

Applications may be mailed to:

Delaware Forestry Association
c/o Laura Upham
Delaware Forest Service
Redden State Forest
18074 Redden Forest Drive
Georgetown, DE 19947



Delaware Forest Service News

In 2010 and 2020, the Delaware Forest Service developed a forest action plan that included two components: an initial Statewide Forest Resource Assessment and a subsequent Statewide Forest Strategy. I want to express appreciation to all who were involved in that process. We are hitting our halfway point to the 2030 update. Therefore, we will not only be required to provide a progress report outlining any requested changes, but also provide progress reports for the goals listed in the strategy. In the coming months, I will be asking our members to participate in this process. The information collected from the Delaware Forestry Association will eventually help guide any changes for our statewide goals so that we can continue a strong effort to accomplish them for the complete rewrite in 2030.

Over the past year, the Delaware Forest Service worked with the Governor's Office and Office of State Planning to help address land-use conversion throughout the State of Delaware. In fulfilling our mission to conserve, protect, and enhance, the Delaware Forest Service developed an updated mapping layer that all Delaware state agencies can utilize. This tool will help identify areas where we need to focus conservation efforts, prioritize funding, create areas of concern if development pressures are present, and assist local governments with their missions. We will expand the use of this throughout 2025 and plan to update it annually as data becomes available.

Lastly, the Delaware Forest Service has made substantial efforts to educate the public and our elected officials about forestry efforts in the First State. Through these efforts, we showcase that silviculture leads to sustainability and helps to mitigate climate change. These efforts have led discussions, adjusted legislation, and created awareness for additional funding to support landowners and their conservation goals. It has been a highly successful year with many wins for the industry, landowners, and the Forest Service.

Kyle R. Hoyd
State Forester

February 5, 2025

Please note contacts for the Delaware Forest Service programs:

Forest Health

Bill Seybold
(302) 698-4553
william.seybold@delaware.gov

Forest Stewardship

Laura Upham
(302) 856-2893
laura.upham@delaware.gov

Forestry Education

Ashley Melvin
(302) 698-4551
ashley.melvin@delaware.gov

Urban & Community Forestry

Taryn Davidson
(302) 659-6704
taryn.davidson@delaware.gov

Wildland Fire

Sam Topper
(302) 698-4544
sam.topper@delaware.gov



View all DFS contacts at de.gov/forestry

TREE FARM UPDATE:

Dear Delaware Tree Farmer,

In 2024 I think we finally breathed a little bit of life back into the Tree Farm Program in Delaware. The committee met several times, we helped sponsor a fall field day and logger appreciation event and completed most of this year's national sample for inspections. I hope we can carry this momentum into 2025! The logger appreciation event in my opinion was a huge success and I hope that we can continue doing similar events and keep the fall field day going. Tree Farmer's have always valued the opportunity for networking, something we really lost during Covid, and it was great to all get together twice last year. On that note, I would love to hear from you as to what kind of educational events you would like to see. Field tours are a lot of fun, but I would even love to possibly host a few webinars or other educational event.

To those of you who filled out and sent back your surveys last year, thank you!! These have been very interesting to read, and I hope that they will help guide the future of your program. For those of you who said you would like to be contacted by a Delaware Forest Service forester thank you for your patience. 2024 was an extremely challenging year staffing wise, and 2025 is starting off the same. Once we get the vacant forester positions in Sussex and Kent counties filled, one of the new foresters first task will be reaching out to those of you who asked. In the meantime, if you need any assistance or advice you can always reach out to me.

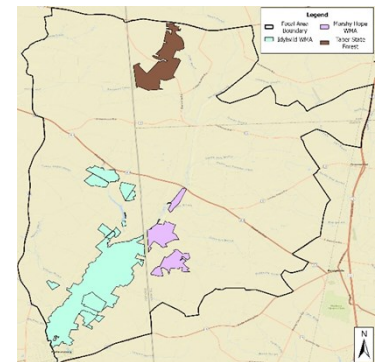
I look forward to seeing many of you at our annual banquet in Felton next month.

Laura Upham
Secretary



HABITAT UPDATE:

The **Marshy Hope Focal Area** has been established as a priority area for forest management and restoring habitat types that are critical to benefit a variety of wildlife, including species of greatest conservation need, like the northern bobwhite quail. This area encompasses the Marshy Hope Forest Legacy Area, Taber State Forest, and the Marshy Hope Wildlife Management Area. With ongoing restoration efforts on Taber and at Marshy Hope, this focal area can increase habitat connectivity between the two, increasing wildlife diversity and improving recreational opportunities.



At the beginning of 2025, Tall Timbers and Quail Forever had postcards mailed to 193 landowners who own 50 acres or more within the focal area as part of a broader effort to encourage landowner participation. The postcard also serves as an invitation to interested landowners to attend an educational workshop hosted by Tall Timbers and Quail Forever at the Farmington Fire Hall on **March 5, 2025**. All interested ones are invited! For more information, please contact:

Kyle Magdziuk

Tall Timbers Prescribed Fire Coordinator & Game Bird Biologist
(315) 532-2008
kmagdziuk@talltimbers.org

Sierra Patterson

Quail Forever Farm Bill Biologist (Delaware)
(443) 867-4092
spatterson@pheasantsforever.org

Natural Resources Careers Camp - Now Accepting Summer 2025 Applications!

Sunday, July 20
through
Saturday, July 26

Hickory
Environmental
Education Center

604 Pride Pkwy,
Accident, MD 21520

Camping

Fishing

Hunting

Tree-planting

...And more outdoor activities!



A collaboration of the Maryland Forestry Foundation, Allegany College of Maryland, and the Maryland Forest Service, this program is designed for high school students seeking to explore career paths and college opportunities in the realm of natural resources.

Learn about what natural resources career options available, get hands-on experience with professionals, and hear regional colleges and universities discuss their natural resources degree programs designed for entry into the field. **Space is limited, apply now!**

Visit: www.marylandforestryfoundation.org/programs/students-educators/nrcc



GRANT OPPORTUNITY - FOREST RESILIENCY FUND:

The Delaware Forest Service would like to announce the creation of the Forest Resiliency Fund (FRF). Announced by the United States Department of Agriculture (USDA) in December 2024, this cost-share program is made possible through funding from the Inflation Reduction Act and the USDA's Forest Service Landowner Assistance Program. The program's goals are to help mitigate climate change and increase forest resiliency, in addition to supporting the goals of Delaware's forest action plan.

Eligible practices for this grant program are tree planting projects, invasive species control, and prescribed fire. The FRF program intends to give special consideration to private forest landowners who are traditionally underserved. These groups include new landowners, veterans, tribal members, and those owning land located in high-poverty areas. In addition to providing technical assistance, outreach, and education to help these groups in Delaware participate in emerging environmental markets, the funding will enable the Delaware Forest Service to provide **100% cost-sharing to only underserved landowners, and 90% cost-sharing for other landowners**. For additional information, please get in touch with Laura Upham at (302) 856-2893 ext. 104 or at laura.upham@delaware.gov.

5

6

7

8

9

10

11

12

13

14

15

16

17

18

19

20

21

22

23

24

25

26

27

28

29

30

31

32

33

34

35

36

37

38

39

40

41

42

43

44

45

46

47

48

49

50

51

52

53

54

55

56

57

58

59

60

61

62

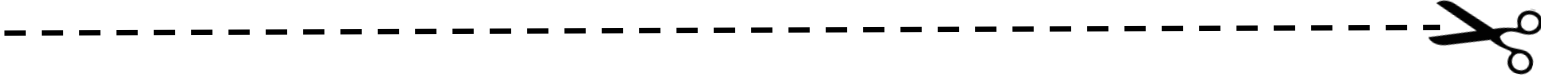
63

64

65

66

67



68

69

70

71

72

73

74

75

76

77

78

79

80

81

82

83

84

85

86

87

88

89

90

91

92

93

94

95

96

97

98

99

100

101

102

103

104

105

106

107

108

109

110

111

112

113

114

115

116

117

118 Family '2